

## HUP7 series pushbutton switch

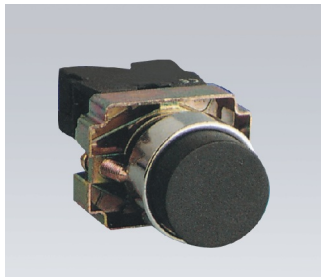
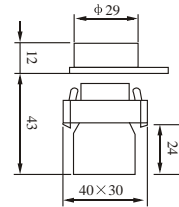
### Pushbutton spring return

| Description | Color | Contact type |  | Type | Overall dimensions |
|-------------|-------|--------------|--|------|--------------------|
|             |       |              |  |      |                    |



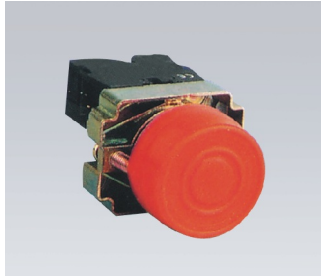
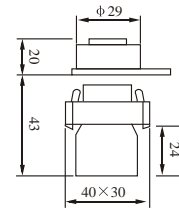
flush pushbuttons

|  |     |           |
|--|-----|-----------|
|  | N/O | HUP7-BA11 |
|  | N/O | HUP7-BA21 |
|  | N/O | HUP7-BA31 |
|  | N/O | HUP7-BA51 |
|  | N/O | HUP7-BA61 |
|  | N/C | HUP7-BA22 |
|  | N/C | HUP7-BA42 |



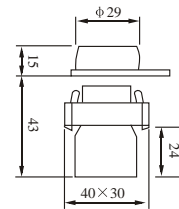
projecting pushbuttons

|  |     |           |
|--|-----|-----------|
|  | N/O | HUP7-BL21 |
|  | N/O | HUP7-BL31 |
|  | N/O | HUP7-BL51 |
|  | N/O | HUP7-BL61 |
|  | N/C | HUP7-BL22 |
|  | N/C | HUP7-BL42 |



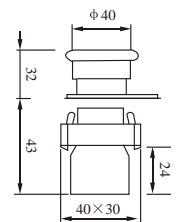
booted pushbuttons

|  |     |           |
|--|-----|-----------|
|  | N/O | HUP7-BP21 |
|  | N/O | HUP7-BP31 |
|  | N/O | HUP7-BP51 |
|  | N/O | HUP7-BP61 |
|  | N/C | HUP7-BP42 |



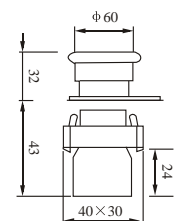
mushroom head pushbuttons  
φ 40mm

|  |     |           |
|--|-----|-----------|
|  | N/O | HUP7-BC21 |
|  | N/O | HUP7-BC31 |
|  | N/O | HUP7-BC51 |
|  | N/O | HUP7-BC61 |
|  | N/C | HUP7-BC42 |



mushroom head pushbuttons  
φ 60mm

|  |     |           |
|--|-----|-----------|
|  | N/O | HUP7-BR21 |
|  | N/C | HUP7-BR42 |



## HUP7 series pushbutton switch

Spring return with function symbols on button

| Description | Color | Contact type | Type | Overall dimensions |
|-------------|-------|--------------|------|--------------------|
|-------------|-------|--------------|------|--------------------|

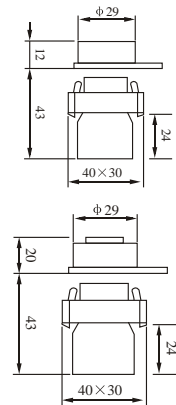


flush pushbuttons

|  |     |             |
|--|-----|-------------|
|  | N/O | HUP7-BA3311 |
|  | N/O | HUP7-BA3341 |
|  | N/O | HUP7-BA3351 |
|  | N/C | HUP7-BA4322 |
|  | N/C | HUP7-BA4342 |

projecting pushbuttons

|  |     |             |
|--|-----|-------------|
|  | N/C | HUP7-BL4322 |
|  | N/C | HUP7-BL4342 |



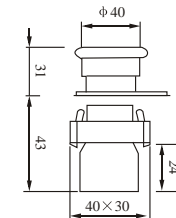
## Mushroom head "emergency stop" pushbutton

| Description | Contact type | Type | Overall dimensions |
|-------------|--------------|------|--------------------|
|-------------|--------------|------|--------------------|



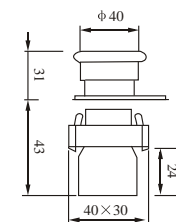
push-pull red

|      |     |           |
|------|-----|-----------|
| φ 40 | N/C | HUP7-BT42 |
| φ 60 | N/C | HUP7-BX42 |



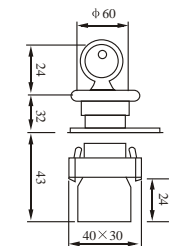
turn to release-red

|      |     |            |
|------|-----|------------|
| φ 30 | N/C | HUP7-BS442 |
| φ 40 | N/C | HUP7-BS542 |
| φ 60 | N/C | HUP7-BS642 |



(Ronish<sup>°</sup> 455)  
Key release  
(keyn<sup>°</sup> 455)  
red

|      |     |            |
|------|-----|------------|
| φ 30 | N/C | HUP7-BS742 |
| φ 40 | N/C | HUP7-BS142 |
| φ 60 | N/C | HUP7-BS242 |



## HUP7 series pushbutton switch

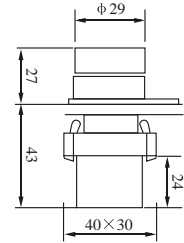
### Selector switch

| Description | Contact type | Type | Overall dimensions |
|-------------|--------------|------|--------------------|
|             |              |      |                    |



### Standard handle

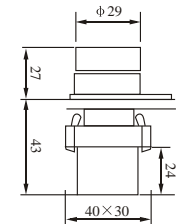
|             |  |         |           |
|-------------|--|---------|-----------|
| 2 positions |  | N/O     | HUP7-BD21 |
|             |  | N/O N/C | HUP7-BD25 |
|             |  | N/O     | HUP7-BD41 |
|             |  | N/O N/C | HUP7-BD45 |
| 3 positions |  | 2N/O    | HUP7-BD33 |
|             |  | 2N/O    | HUP7-BD53 |
|             |  | 2N/O    | HUP7-BD73 |
|             |  | 2N/O    | HUP7-BD83 |



### Long handle



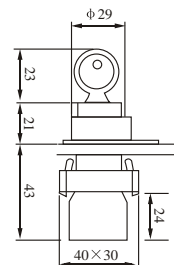
|             |  |         |           |
|-------------|--|---------|-----------|
| 2 positions |  | N/O     | HUP7-BJ21 |
|             |  | N/O N/C | HUP7-BJ25 |
|             |  | N/O     | HUP7-BJ41 |
|             |  | N/O N/C | HUP7-BJ45 |
| 3 positions |  | 2N/O    | HUP7-BJ33 |
|             |  | 2N/O    | HUP7-BJ53 |
|             |  | 2N/O    | HUP7-BJ73 |
|             |  | 2N/O    | HUP7-BJ83 |



### Ronis n° 455 key switches key n° 455



|             |      |           |           |
|-------------|------|-----------|-----------|
| 2 positions |      | N/O       | HUP7-BG21 |
|             |      | N/O N/C   | HUP7-BG25 |
|             |      | N/O       | HUP7-BG41 |
|             |      | N/O N/C   | HUP7-BG45 |
| 3 positions |      | N/O       | HUP7-BG61 |
|             |      | N/O N/C   | HUP7-BG65 |
|             |      | 2N/O      | HUP7-BG33 |
|             |      | 2N/O      | HUP7-BG53 |
|             |      | 2N/O      | HUP7-BG03 |
|             | 2N/O | HUP7-BG73 |           |



Description. Locked spring reset keyout

## HUP7 series pushbutton switch

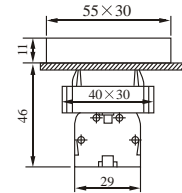
### Double pushbutton

| Description | Circuit | Color | Contact type | Type | Overall dimensions |
|-------------|---------|-------|--------------|------|--------------------|
|-------------|---------|-------|--------------|------|--------------------|



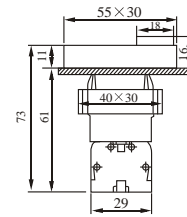
Without pilot light  
1 flush green  
pushbutton  
1 projecting red  
pushbutton

|  |                          |
|--|--------------------------|
|  | N/O N/C IP40 HUP7-BL8325 |
|  | N/O N/C IP65 HUP7-BL9325 |
|  | N/O N/C IP40 HUP7-BL8425 |
|  | N/O N/C IP65 HUP7-BL9425 |



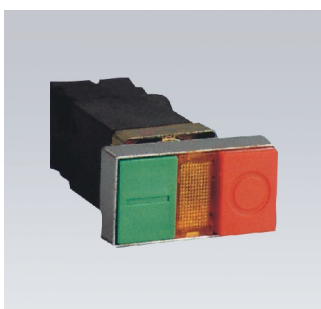
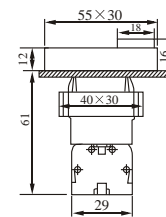
Without pilot light  
1 flush green  
pushbutton  
1 pilot light with  
Yellow lens Direct  
supply  $\leq 380V$   
1 projecting  
red pushbutton

|  |                     |
|--|---------------------|
|  | N/O N/C HUP7-BW8365 |
|  | N/O N/C HUP7-BW8465 |



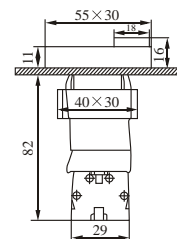
1 flush green  
pushbutton  
1 pilot light with  
Yellow lens 220/250V  
supply direct  
through resistor  
BA 9s, 130V bold  
including 1  
projecting  
red pushbutton

|  |                     |
|--|---------------------|
|  | N/O N/C HUP7-BW8375 |
|  | N/O N/C HUP7-BW8475 |



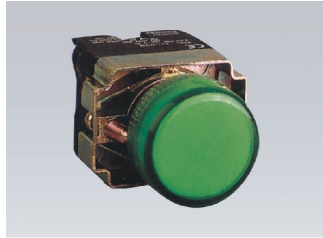
1 flush green  
pushbutton  
1 pilot light with  
with Yellow  
lens 1.2VA-220V  
direct supply  
via integral  
transformer  
BA 9s, 6V, bulb  
including  
1 projecting red  
pushbutton

|  |                     |
|--|---------------------|
|  | N/O N/C HUP7-BW8345 |
|  | N/O N/C HUP7-BW8445 |

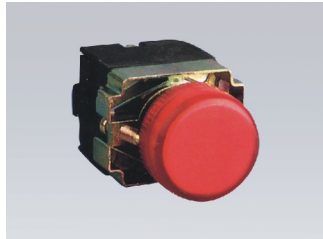


## HUP7 series pushbutton switch

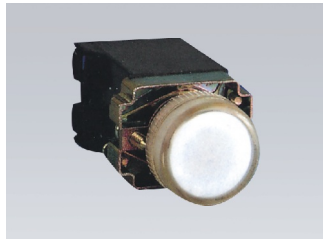
### Double pushbutton



| Description                             | Supply Voltage               | Circuit | Color     | Type | Overall dimensions |
|---|------------------------------|---------|-----------|------|--------------------|
| Direct bulb including BA9a base fitting | ≤380V<br>220/240V<br>50/60Hz |         | HUP7-BV61 |      |                    |
|   |                              |         | HUP7-BV63 |      |                    |
|   |                              |         | HUP7-BV64 |      |                    |
|   |                              |         | HUP7-BV65 |      |                    |
|   |                              |         | HUP7-BV66 |      |                    |



|   |                     |  |           |  |
|---|---------------------|--|-----------|--|
| Via integral resistor<br>BA 9s, LED24V<br>bulb supplied | 220/240V<br>50/60Hz |  | HUP7-BV71 |  |
|   |                     |  | HUP7-BV73 |  |
|   |                     |  | HUP7-BV74 |  |
|   |                     |  | HUP7-BV75 |  |
|   |                     |  | HUP7-BV76 |  |



|  |                            |  |           |  |
|--|----------------------------|--|-----------|--|
| Via integral transformer<br>1.2VA BA 9s, 6V<br>bulb supplied | 110V/50Hz<br>110-120V/60Hz |  | HUP7-BV31 |  |
|  |                            |  | HUP7-BV33 |  |
|  |                            |  | HUP7-BV34 |  |
|  |                            |  | HUP7-BV35 |  |
|  |                            |  | HUP7-BV36 |  |



|  |           |  |           |  |
|--|-----------|--|-----------|--|
| Via integral transformer<br>1.2VA BA 9s, 6V<br>bulb supplied | 220V/50Hz |  | HUP7-BV41 |  |
|  |           |  | HUP7-BV43 |  |
|  |           |  | HUP7-BV44 |  |
|  |           |  | HUP7-BV45 |  |
|  |           |  | HUP7-BV46 |  |



|  |           |  |            |  |
|--|-----------|--|------------|--|
| Via integral transformer<br>1.2VA BA 9s, 6V<br>bulb supplied | 240V/50Hz |  | HUP7-BV941 |  |
|  |           |  | HUP7-BV943 |  |
|  |           |  | HUP7-BV944 |  |
|  |           |  | HUP7-BV945 |  |
|  |           |  | HUP7-BV946 |  |

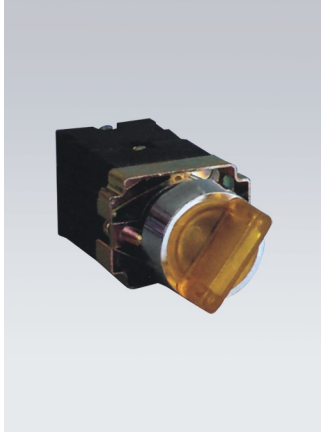


|  |                        |  |            |  |
|--|------------------------|--|------------|--|
| Via integral transformer<br>1.2VA BA 9s, 6V<br>bulb supplied | 380V/50Hz<br>415V/50Hz |  | HUP7-BV53  |  |
|  |                        |  | HUP7-BV54  |  |
|  |                        |  | HUP7-BV55  |  |
|  |                        |  | HUP7-BV933 |  |
|  |                        |  | HUP7-BV934 |  |
|  |                        |  | HUP7-BV935 |  |

## HUP7 series pushbutton switch

### Selector switches with pilot light

| Description             | Circuit | Contact type | Type        | Overall dimensions |
|-------------------------|---------|--------------|-------------|--------------------|
|                         |         |              |             |                    |
| 2 positions<br>stay put |         | N/O N/C      | HUP7-BK2365 |                    |
|                         |         | N/O N/C      | HUP7-BK2465 |                    |
|                         |         | N/O N/C      | HUP7-BK2565 |                    |
|                         |         | N/O N/C      | HUP7-BK2665 |                    |
|                         |         | N/O N/C      | HUP7-BK2765 |                    |
| 3 positions<br>stay put |         | N/O N/C      | HUP7-BK3365 |                    |
|                         |         | N/O N/C      | HUP7-BK3465 |                    |
|                         |         | N/O N/C      | HUP7-BK3565 |                    |
|                         |         | N/O N/C      | HUP7-BK3665 |                    |
|                         |         | N/O N/C      | HUP7-BK3765 |                    |
|                         |         | N/O N/C      | HUP7-BK5365 |                    |
|                         |         | N/O N/C      | HUP7-BK5465 |                    |
|                         |         | N/O N/C      | HUP7-BK5565 |                    |
|                         |         | N/O N/C      | HUP7-BK5665 |                    |
|                         |         | N/O N/C      | HUP7-BK5765 |                    |



### Selector switch

| Description     | Contact type | Type      | Overall dimensions |  |
|-----------------|--------------|-----------|--------------------|--|
|                 |              |           |                    |  |
| 2 positions<br> | Locked       | 2N/O 2N/C | HUXD2PHUP12        |  |
|                 | spring reset | 2N/O 2N/C | HUXD2PA22          |  |
| 4 positions<br> | Locked       | 4N/O 4N/C | HUXD2PA14          |  |
|                 | spring reset | 4N/O 4N/C | HUXD2PA24          |  |



### Mounting hole diagram of selector switch

Mounting panel thickness: 1~6mm

